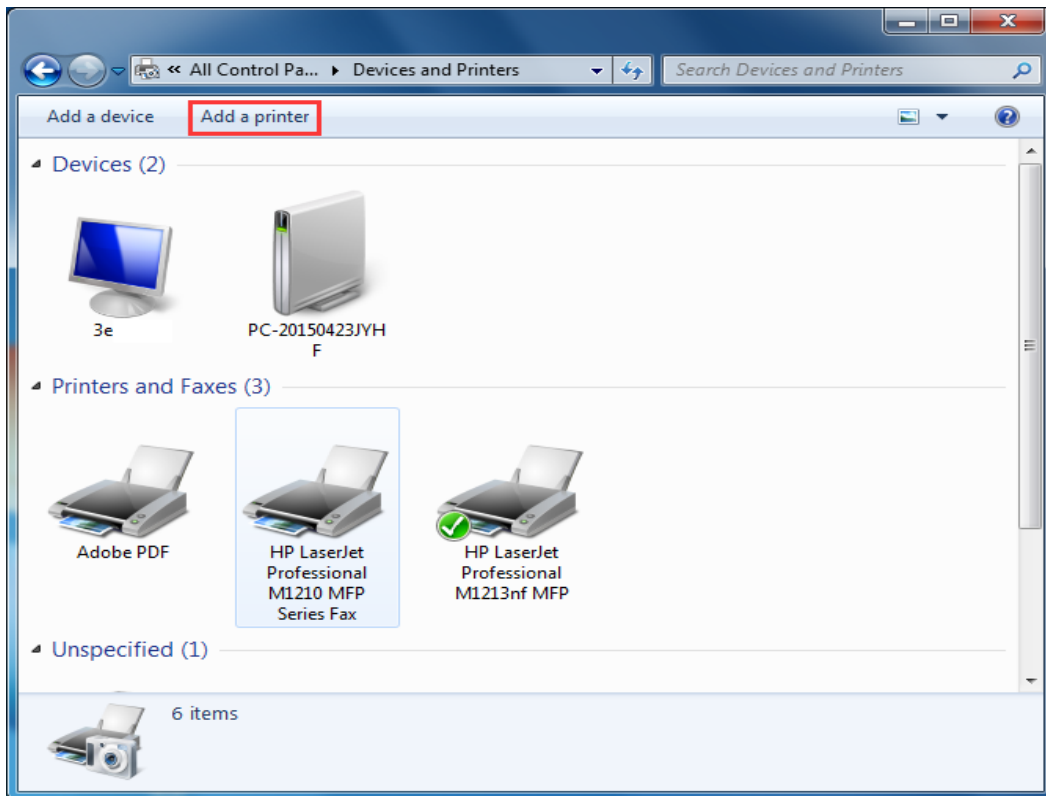


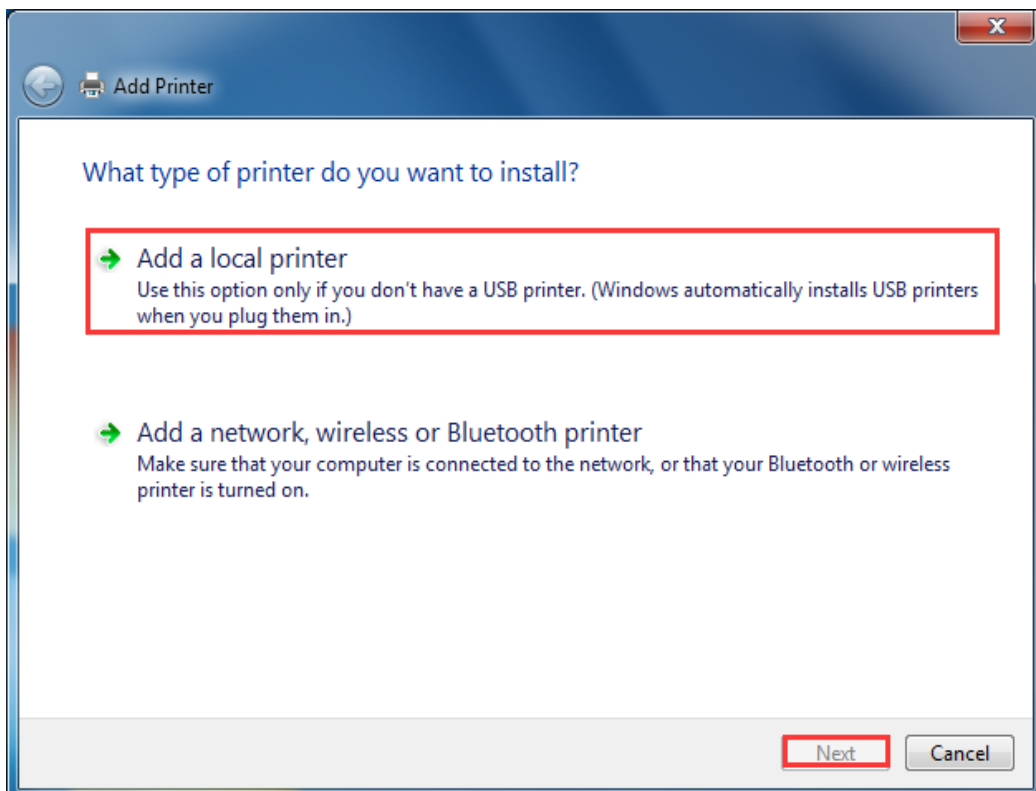
Method to add a new printer

Problems may happen during installation, please follow below steps to add a printer when you can not see driver icon shown on devices and printers

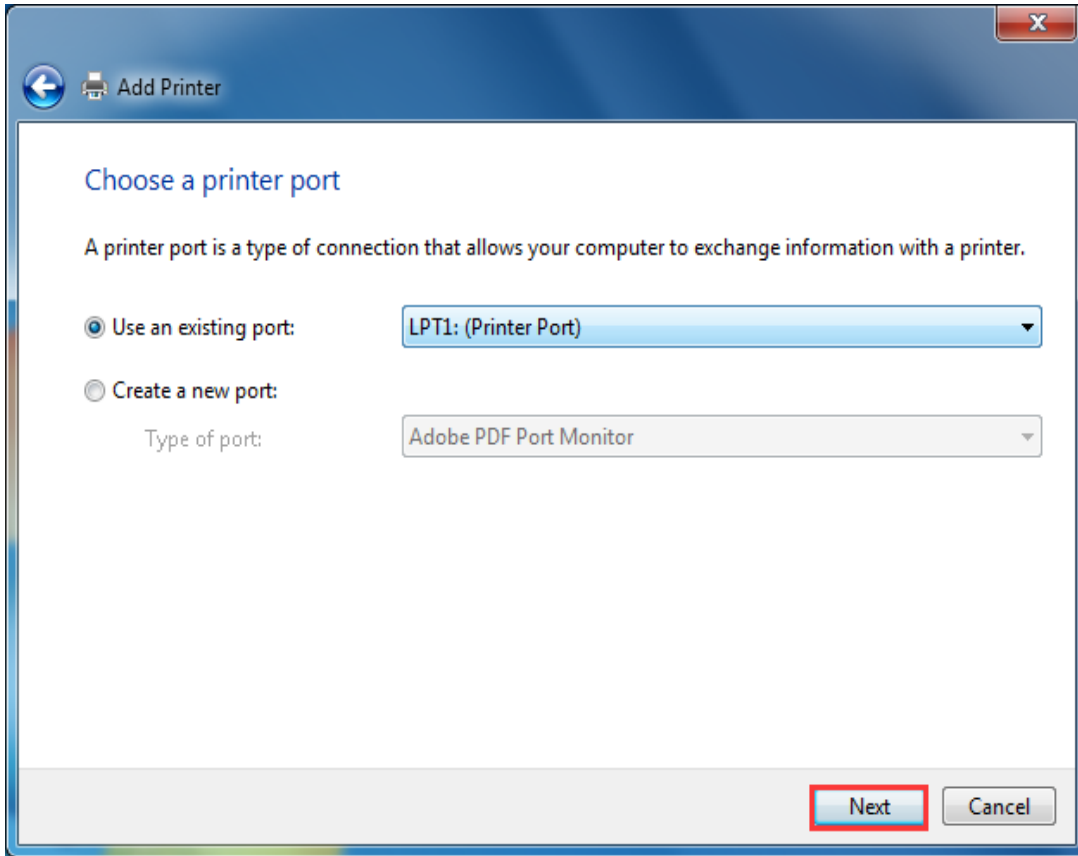
1、 Open devices and printers



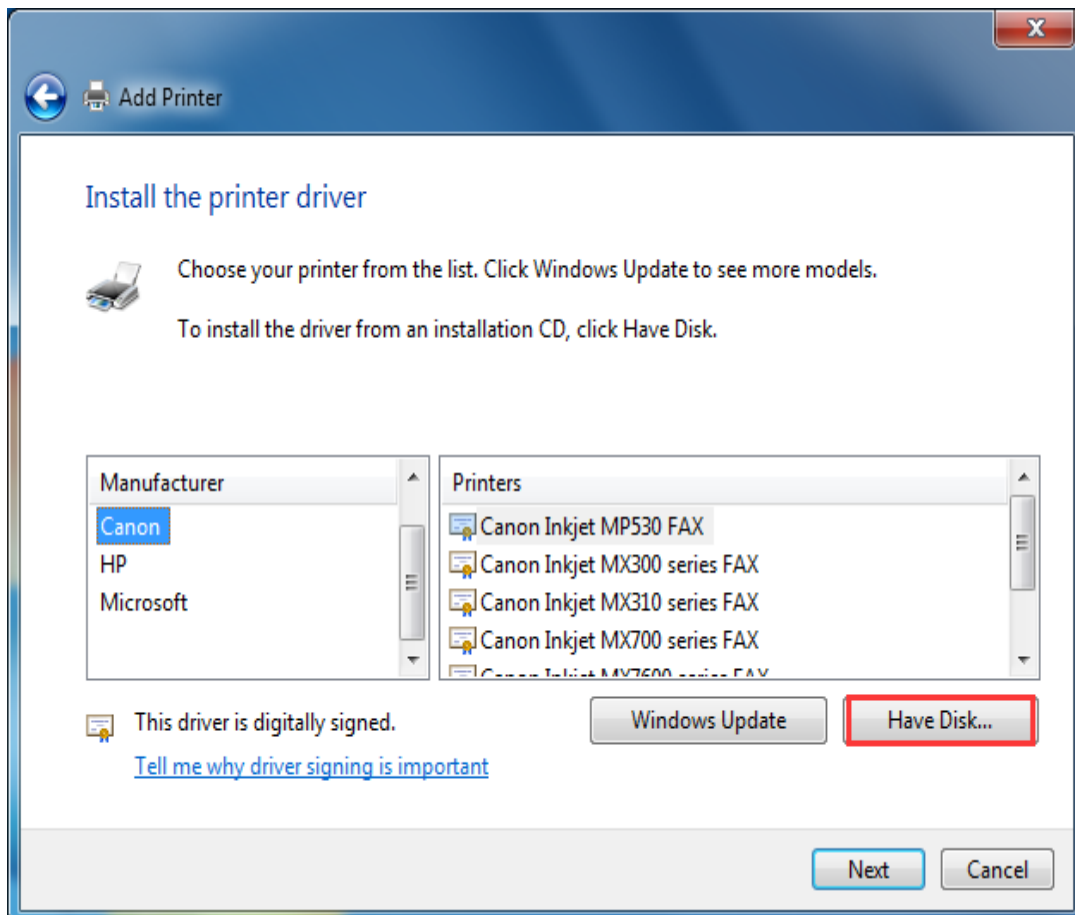
2、 Click into [add printer], click [Add local printer] then [next]



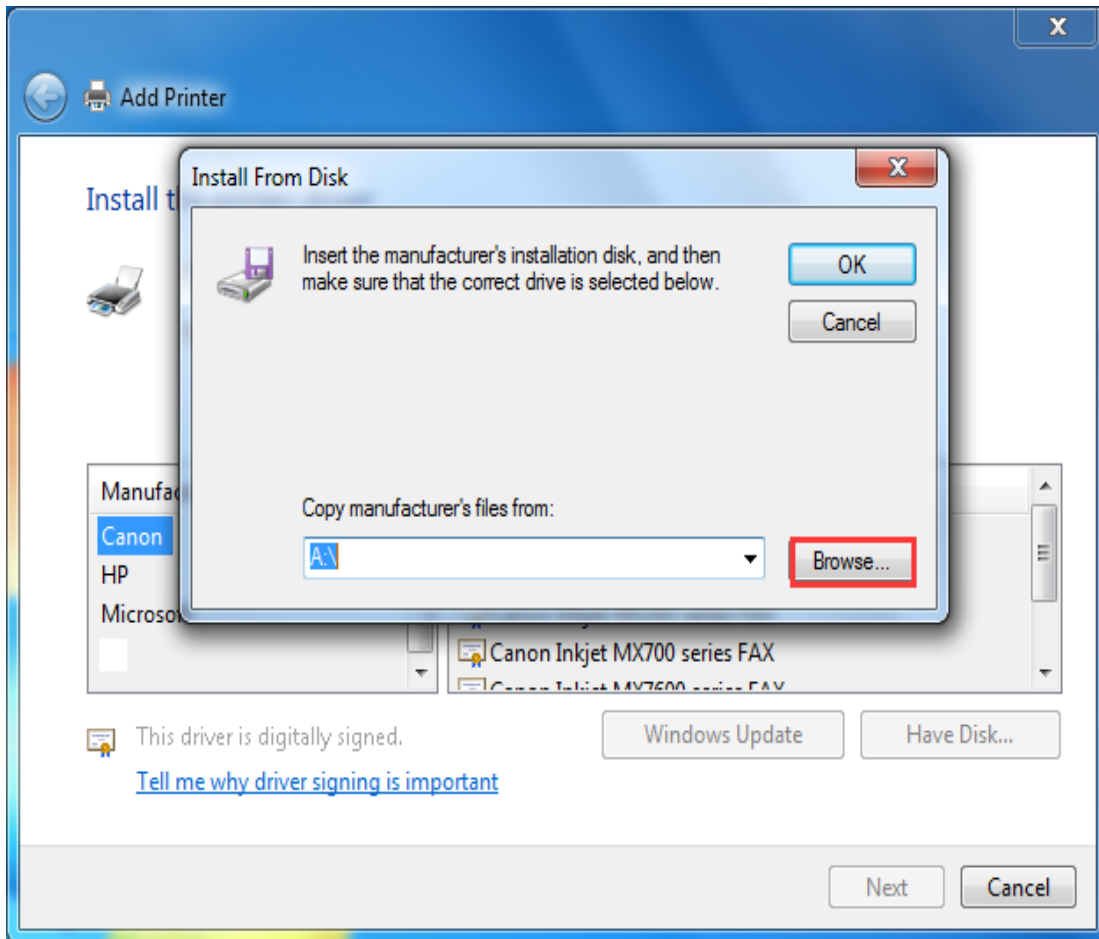
3. Choose LPT port as default ,then click [next]



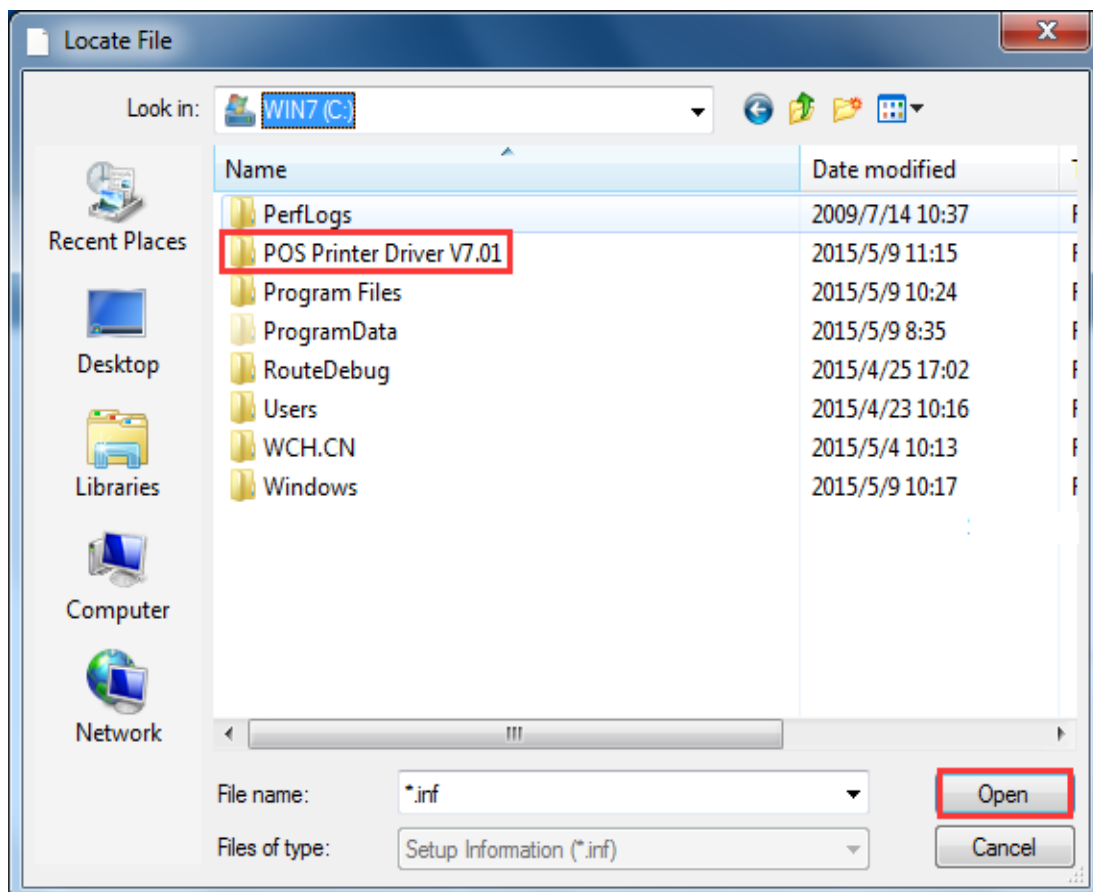
4. Install driver from Have Disk



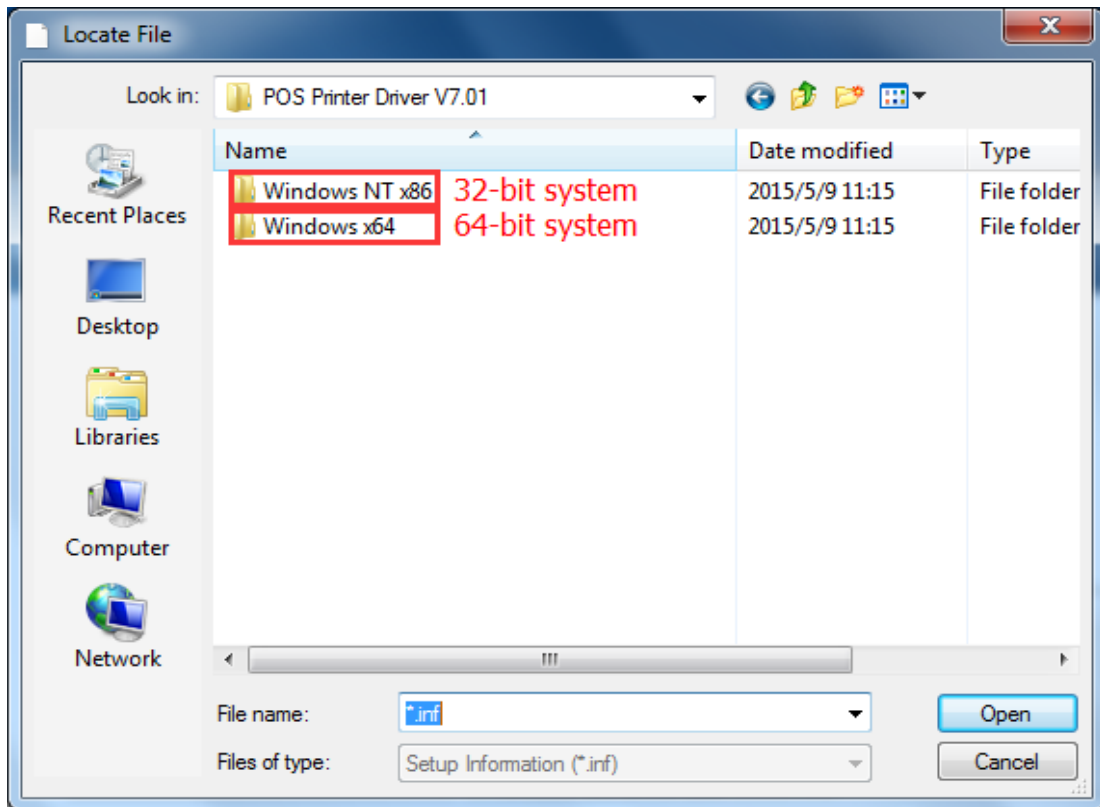
5. Browse C driver as below



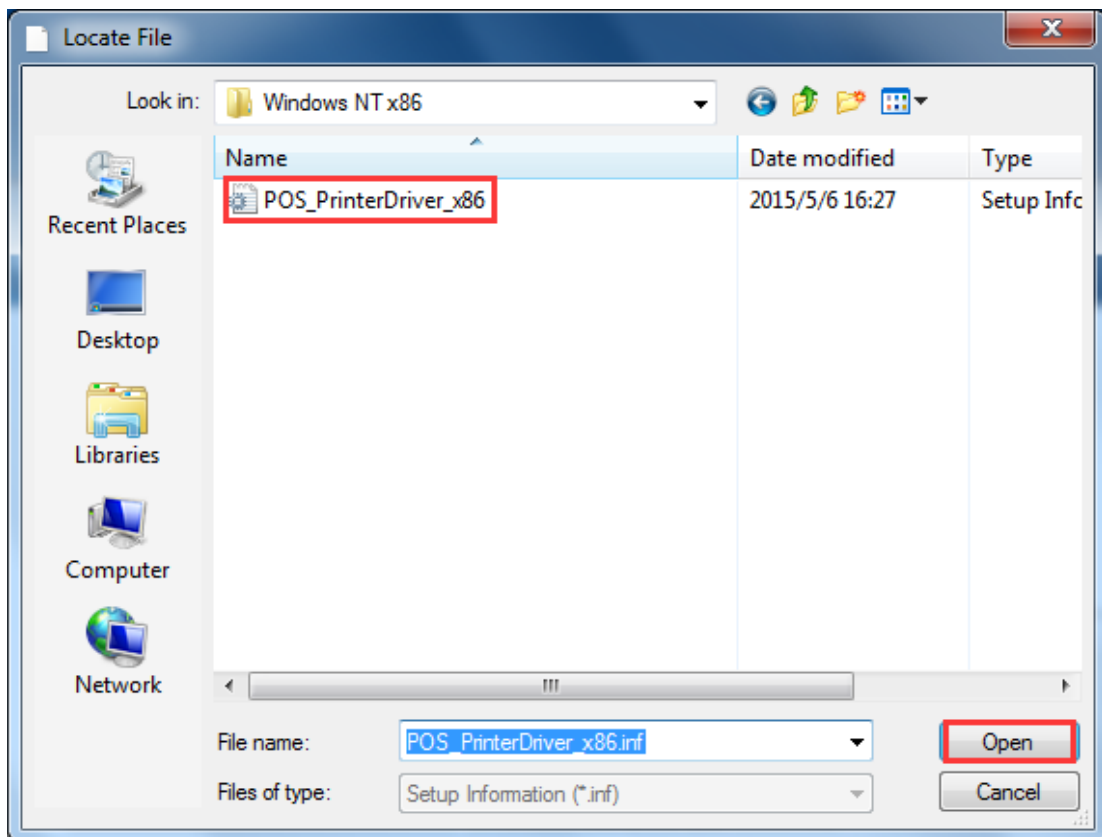
6. Find out file folder name POS PRINTER DRIVER in My Computer C: driver



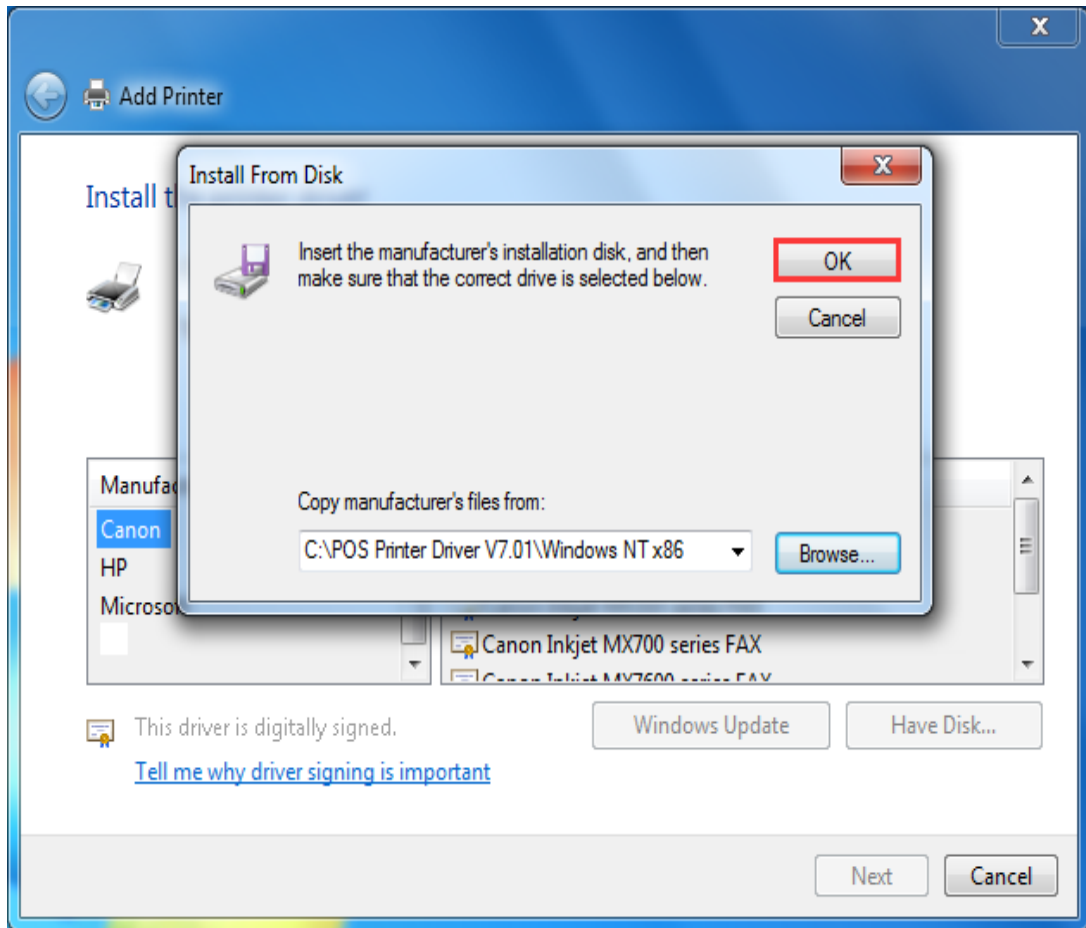
7、 Choose a right system, 32-bit or 64-bit



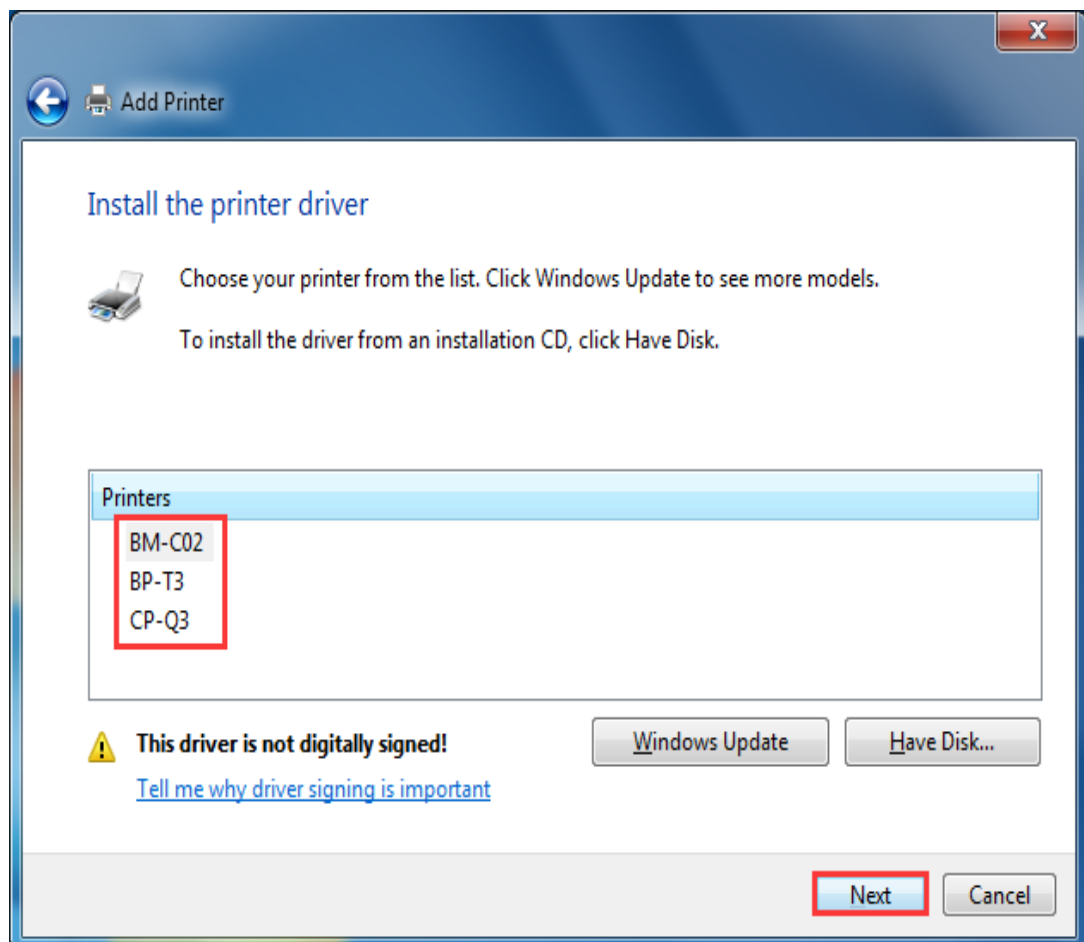
8、 Choose INF file



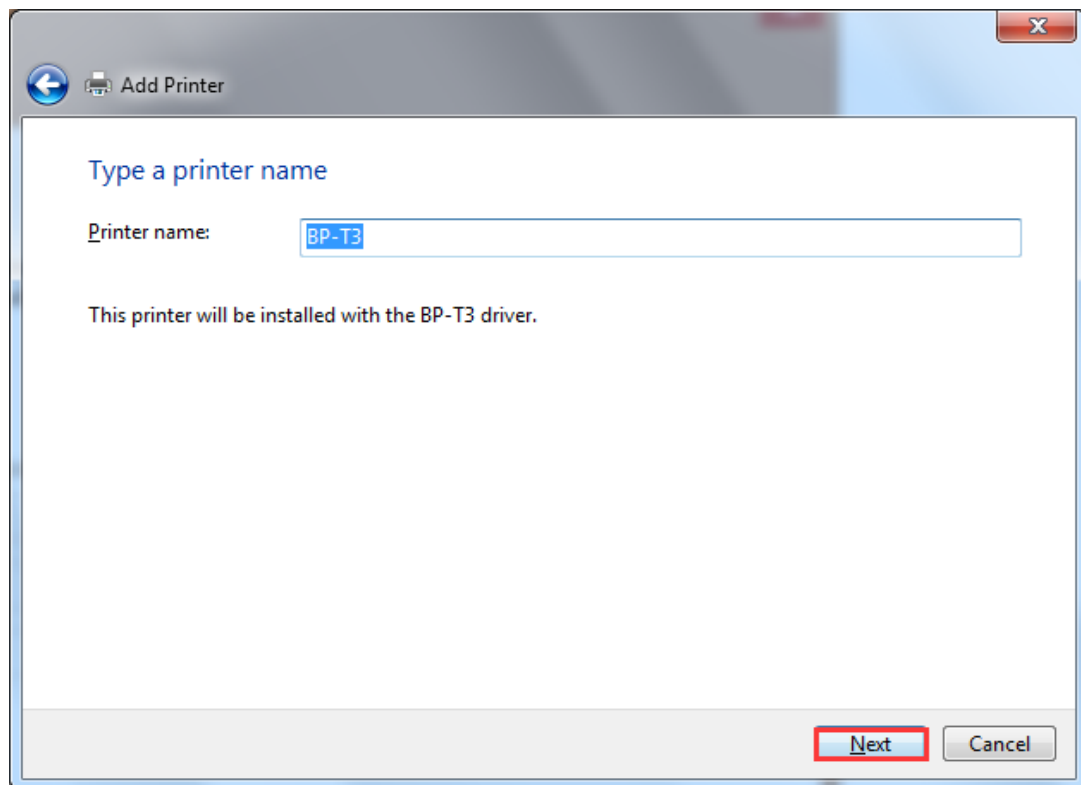
9、 Choose [OK]



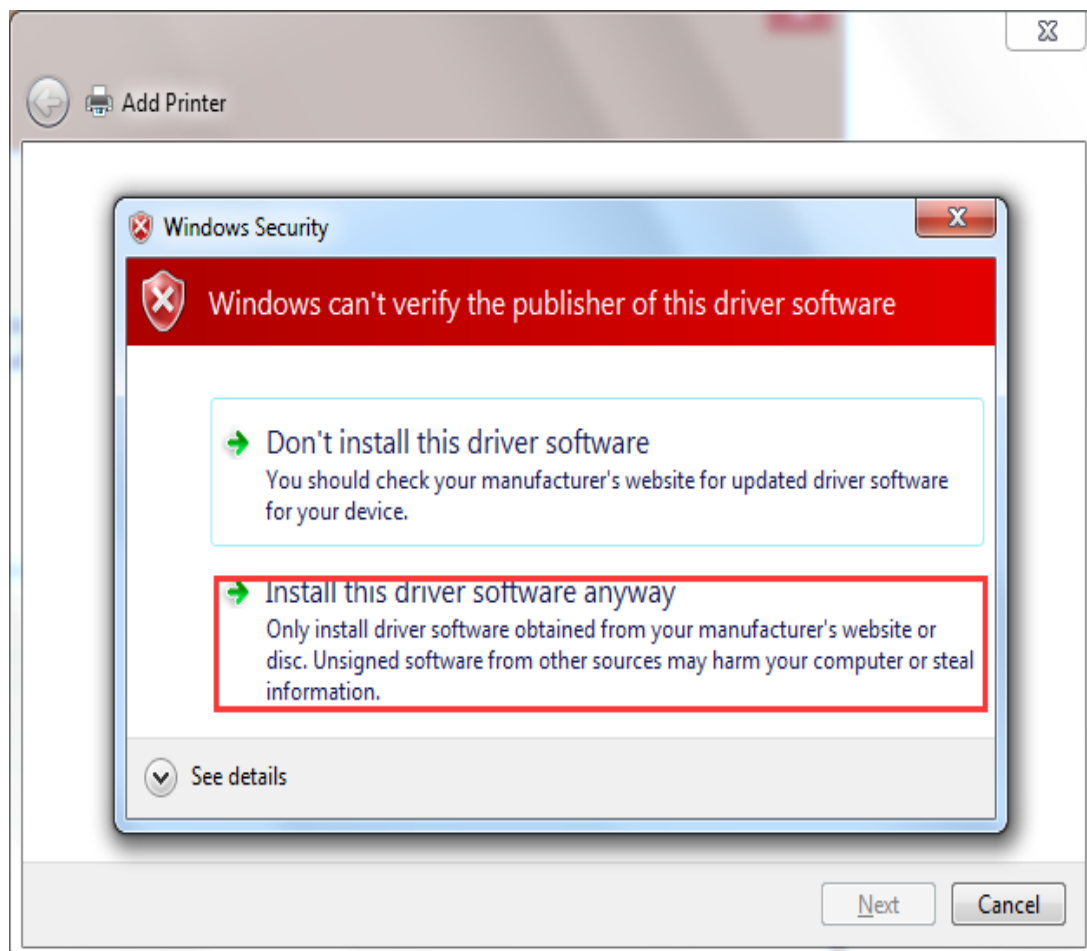
10、 Choose a corresponding printer type, then click [next]



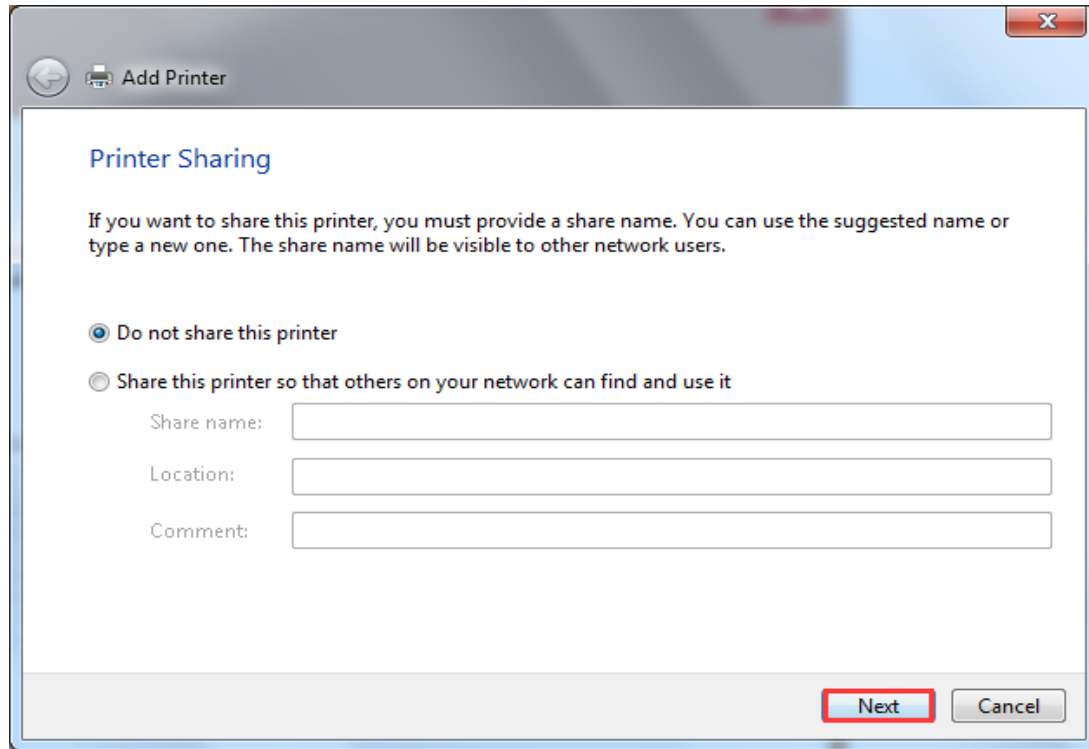
11、 Click [next]



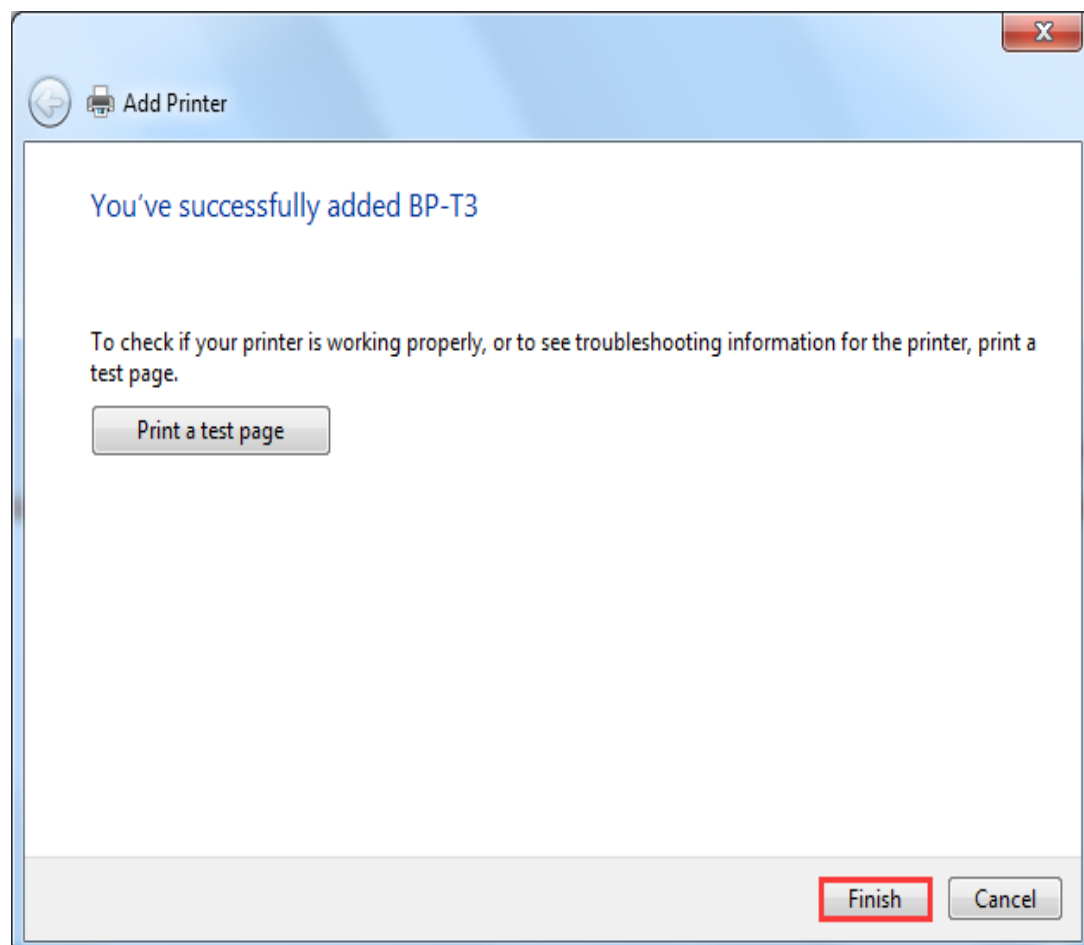
12、 Choose "Install this driver software anyway"



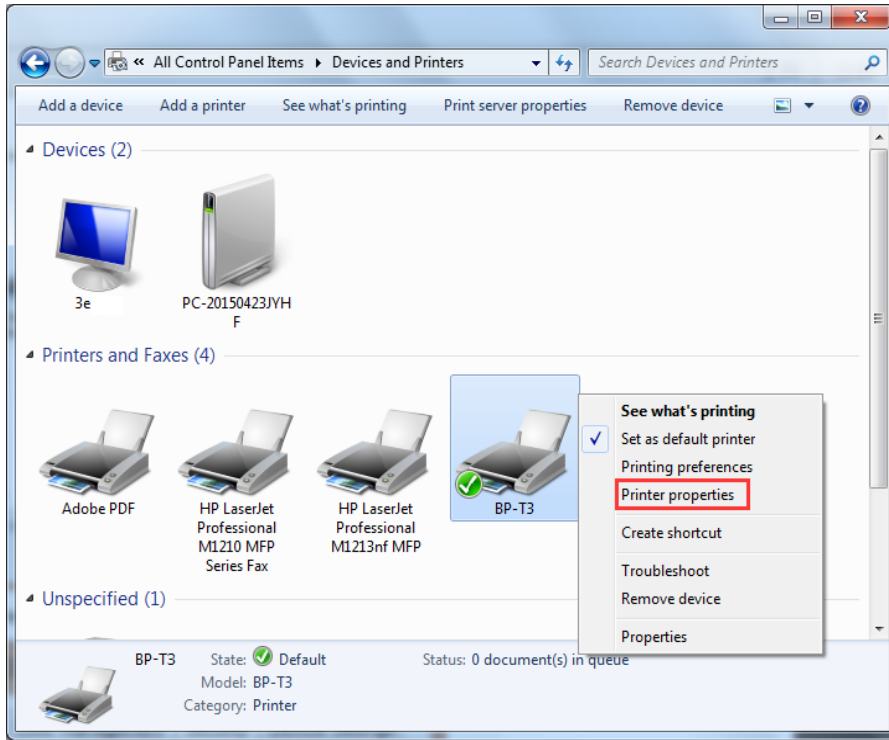
13、 Click [next]



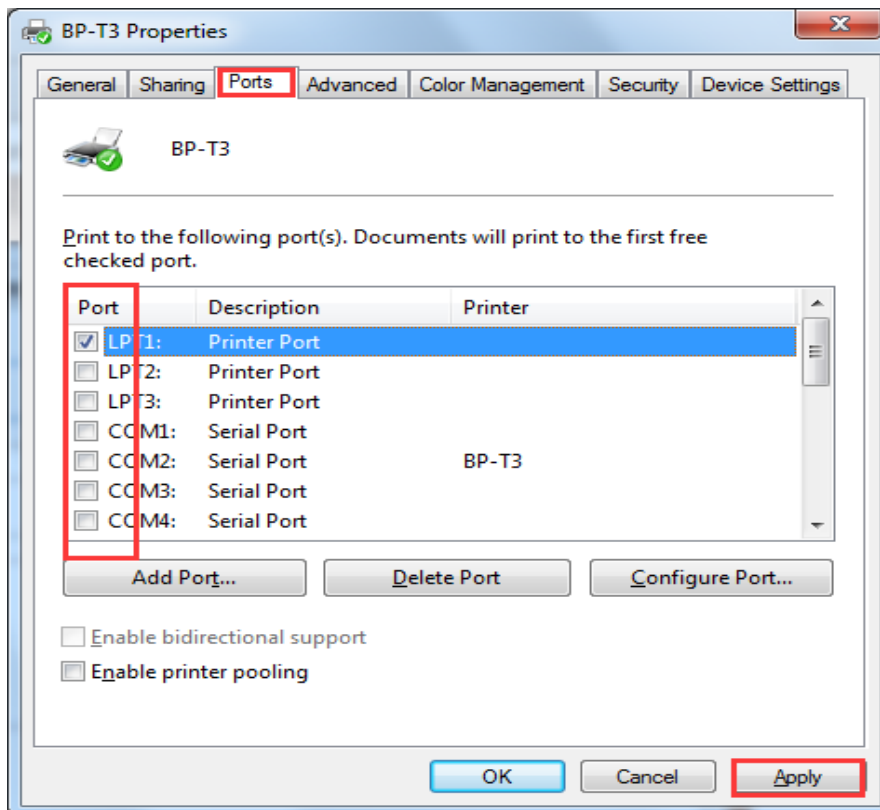
14、 Click [Finish]



15 Click and chose printer properties

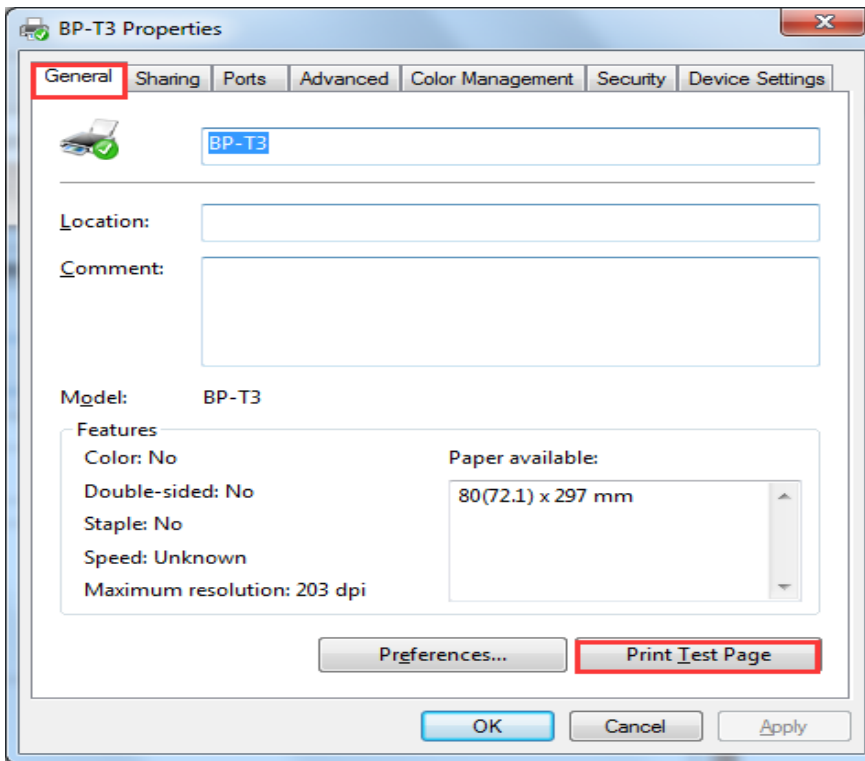


16 Choose a corresponding port, then click [Apply]





15. Click [General], start testing and click [Print Test Page]



*Once you could print test page, said that driver installed successfully*

*Congratulations and thank you!*